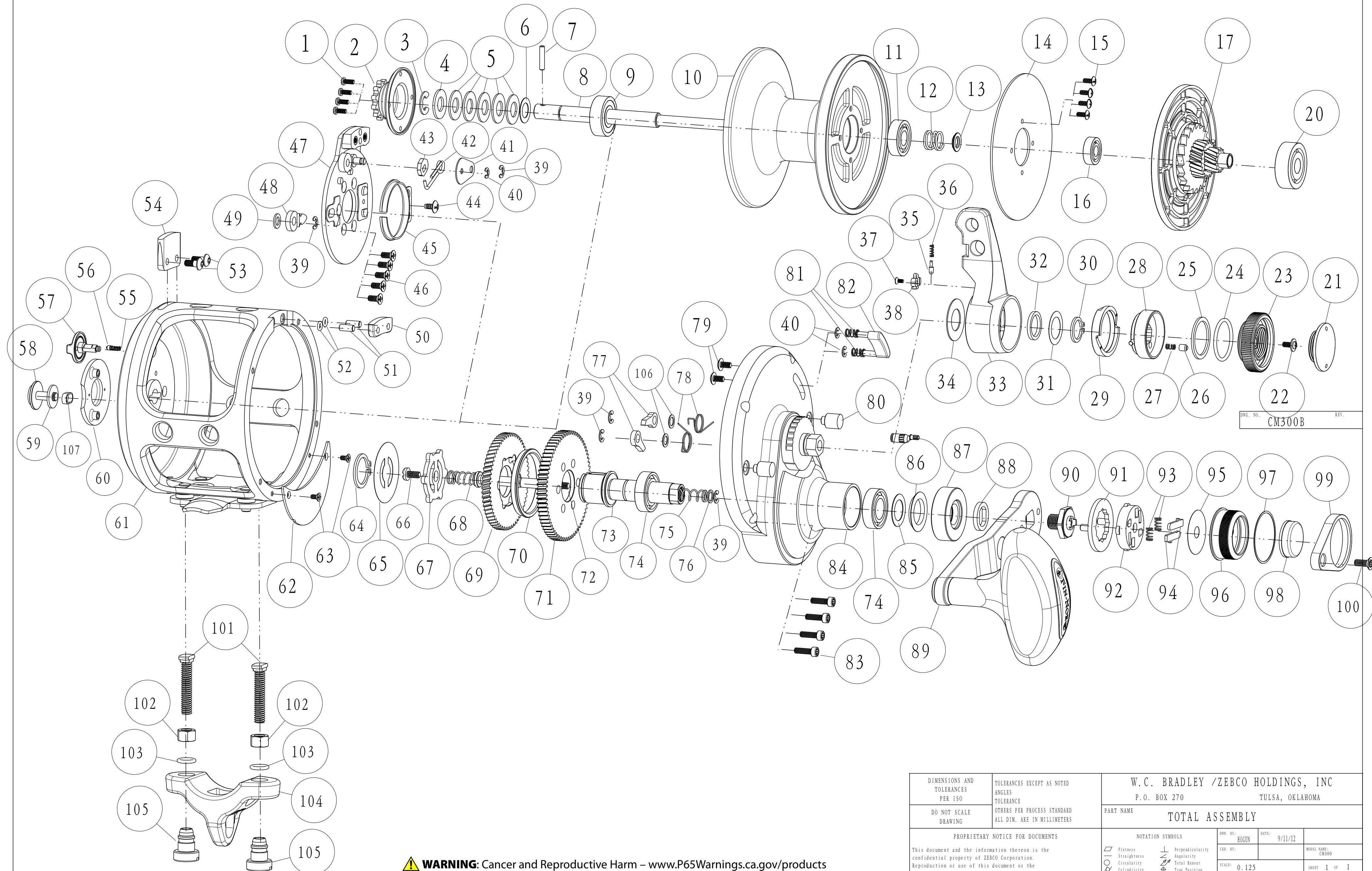


MA40TII & MA50TII EXPLODED VIEW



DWG. NO. CM300B REV.

DIMENSIONS AND TOLERANCES PER ISO DO NOT SCALE DRAWING		TOLERANCES EXCEPT AS NOTED ANGLES TOLERANCE OTHERS PER PROCESS STANDARD ALL DIM. ARE IN MILLIMETERS		W.C. BRADLEY /ZEBCO HOLDINGS, INC P.O. BOX 270 TULSA, OKLAHOMA	
PROPRIETARY NOTICE FOR DOCUMENTS This document and the information thereon is the confidential property of ZEBCO Corporation. Reproduction or use of this document or the information hereon for any purpose without the express written consent of ZEBCO Corporation is strictly prohibited.				PART NAME TOTAL ASSEMBLY	
NOTATION SYMBOLS		DEN. BY: HOGUN DATE: 9/11/12		MODEL NAME: CM300	
<ul style="list-style-type: none"> Flatness Straightness Circularity Cylindricity Surface Profile Line Profile Parallelism 		<ul style="list-style-type: none"> Perpendicularity Angularity Total Runout True Position Concentricity Diameter 		SCALE: 0.125 SHEET 1 OF 1	
				DRW. No.: CM300B	

WARNING: Cancer and Reproductive Harm – www.P65Warnings.ca.gov/products

FinNor Marquesa Two Speed Lever Drag -MA40TII,MA50TII									
Key No.	Description	Part No.		QTY	Key No.	Description	Part No.		QTY
		MA40TII	MA50TII				MA40TII	MA50TII	
1	Screw	LF057-01	↔	4	56	Testion Konb Click Pin	CF108-01	↔	1
2	Bait Click Ratchet Assembly	GM329-01	↔	1	57	Tension Knob	CF026-01	↔	1
3	E-Ring	DF092-01	↔	1	58	Bait Click Lever	CF109-01	↔	1
4	Collar	DF081-02	↔	1	59	Bait Click Lever Washer -A	CF032-01	↔	1
5	Drag Spring	JF046-01	↔	5	60	Badge	CF148-01	↔	1
6	Washer	CF121-01	↔	1	61	Frame Assembly	CM301-01	DM301-01	1
7	Spool Shaft Pin	DF093-01	↔	1	62	Drive Gear Cover	CM143-01	↔	1
8	Spool Shaft	CM015-01	DM015-01	1	63	Screw	CF107-01	↔	2
9	Ball Bearing	VF017-02	↔	1	64	External Ring	AM075-01	↔	1
10	Spool	CM021-01	DM021-01	1	65	Dust Cover - A	AM038-01	↔	1
11	Ball Bearing	KF017-01	↔	1	66	Screw	MF053-01	↔	1
12	Spring	CF040-01	↔	1	67	Link	LF036-02	↔	1
13	Collar	BF094-01	↔	1	68	Coil Spring - Lower	VF070-01	↔	1
14	Drag Disc	CM059-01	↔	1	69	Drive Gear - Low	DM012-01	↔	1
15	Screw	CM057-01	↔	1	70	Spacer	LF160-02	↔	1
16	Ball Bearing	CF117-02	↔	1	71	Drive Gear - High	CM012-01	↔	1
17	Drag Plate Assembly	CM348-02	↔	1	72	Shift Shaft	AM146-01	↔	1
20	Ball Bearing	JF017-01	↔	1	73	Crank Shaft	AM008-01	↔	1
21	Pre Set Knob Cover	CF110-01	↔	1	74	Ball Bearing	CF017-02	↔	2
22	Screw	CX076-04	↔	1	75	Coil Spring - Upper	AM070-01	↔	1
23	Pre Set Knob	CF029-03	↔	1	76	Spacer	AM081-01	↔	1
24	O-Ring	CF101-01	↔	1	77	Anti Reverse Pawl	DF063-02	↔	2
25	Friction Washer	DF121-01	↔	1	78	Stopper Spring	CF096-01	↔	2
26	Click Pin	CF098-01	↔	1	79	Screw	QW123-10	↔	2
27	Click Spring	DF114-01	↔	1	80	Locating Collar	DF118-01	↔	2
28	Drag Cam B Assembly	CF353-01	↔	1	81	Strike Button Pin Spring	CF022-01	↔	2
29	Drag Cam A	CF028-01	↔	1	82	Strike Button	CF062-02	↔	1
30	External Ring	JF075-01	↔	1	83	Screw	CF053-01	↔	4
31	Adjustment Washer	CF038-02	↔	1	84	Gear Side Cover Assembly	CM324-01	↔	1
32	Bushing	DF017-01	↔	1	85	Adjustment Washer	DF035-01	↔	1
33	Drag Lever	CM055-01	↔	1	86	Rubber Seal	CM172-01	↔	1
34	Drag Lever Washer	BM038-01	↔	1	87	Handle Washer	CM054-01	↔	1
35	Click Pawl	CM098-01	↔	1	88	Spacer	AM160-01	↔	1
36	Click Spring	CM114-01	↔	1	89	Handle Assembly	CM318-01	↔	1
37	Screw	DW107-02	↔	1	90	Handle Nut	AM003-01	↔	1
38	Cover	CM161-01	↔	1	91	Handle Nut Retainer	AM034-01	↔	1
39	E-Clip	NX092-01	↔	4	92	Trip Holder	BM159-01	↔	1
40	E-Clip	NX060-01	↔	3	93	Coil Spring	MF070-01	↔	2
41	Holder	CF159-01	↔	1	94	Plate	LF104-01	↔	2
42	Torsion Spring	CF070-01	↔	1	95	Dust Cover - B	BM035-01	↔	1
43	Cam	DF028-01	↔	1	96	Shift Knob	AM158-01	↔	1
44	Tapping Screw	QW125-02	↔	1	97	Washer	AM035-01	↔	1
45	Click Spring	DF022-01	↔	1	98	Shift Button	AM062-01	↔	1
46	Screw	TW107-04	↔	5	99	Shift Knob Holder	AM159-01	↔	1
47	Click Plate Holder	CM129-01	↔	1	100	Handle Nut Screw	MF076-01	↔	1
48	Bait Click Pawl	DF109-02	↔	1	101	Rod Clamping Bolt	CF125-01	↔	2
49	Bait Click Lever Washer -B	CF035-01	↔	1	102	Nut	JF003-01	↔	2
50	Harness Lug Spacer - Right	CM160-01	↔	1	103	O-Ring	LF101-01	↔	2
51	Pin	CM093-01	↔	2	104	Rod Clamp	XF154-01	↔	1
52	O-Ring	CM101-01	↔	2	105	Rod Clamp Nut	CF161-01	↔	2
53	Screw	CM123-01	↔	2	106	Mylar Washer	BAA076-01	↔	2
54	Harness Lug Spacer - Left	DM160-01	↔	1	107	Bait Click Lever Bushing	CM088-01	↔	1
55	Coil Spring	DF070-01	↔	1					

Rev.2 7/26/2012

Rev.3 9/5/2012

Rev.B 2/1/2013

Rev.C 10/19/2016 ECN00135